

Nuevo

Lot 1052



Land Size: 355sqm

House Size: 224sqm

Land Price: \$479,000

House Price \$335,500

House & Land \$814,500

4  2  2 

TURNKEY HOUSE & LAND PACKAGES – INCLUSIONS

All homes include quality fixtures & fittings such as:

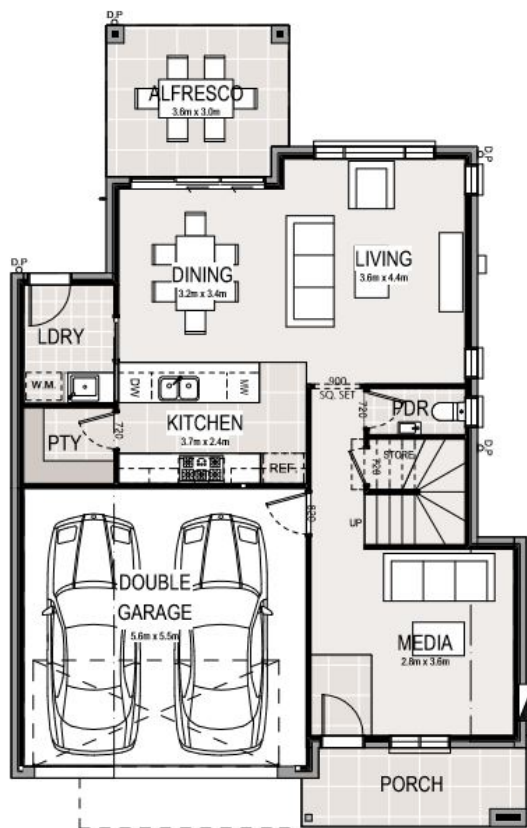
- Stylish interiors offering three preselected colour schemes
- 20mm reconstituted stone kitchen benchtop with square edge
- Laminated timber flooring or ceramic tiles to living and dining area
- First grade quality carpet to remaining areas
- Down lights to entry, hallway and wet areas, oyster lights to living, dining and bedrooms
- Landscaping to both front and backyards, fencing and driveways
- Air-conditioning
- Quality Kitchen Appliances
- Soft close to drawers
- Door Bell, Clothesline, Letter Box



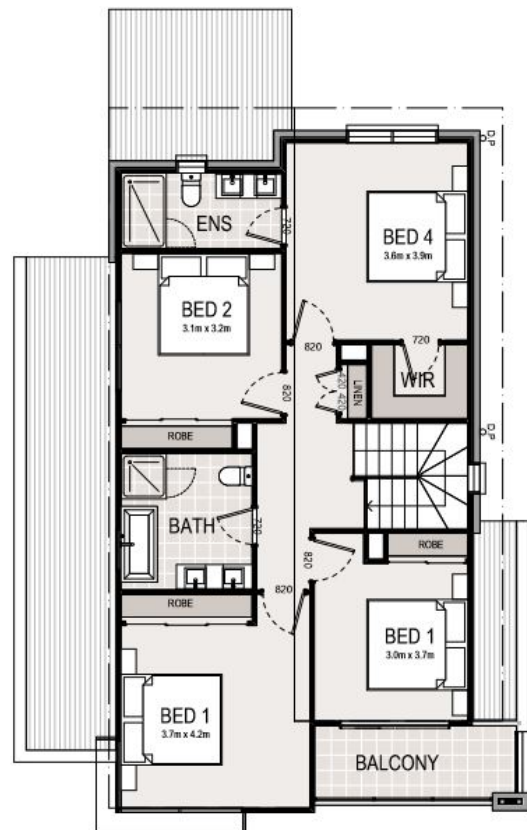
Land size: 355m²

4  2  2 

GROUND FLOOR



FIRST FLOOR



Ground Floor	77.20m ²
Garage	33.67m ²
Porch	6.75m ²
TOTAL	224.26m²

Disclaimer: Please note that this material was produced prior to construction and is intended as an indication of the items to be included and/or the general layout of the property and is merely indicative and should not be construed as constituting an offer, guarantee or contract. The Vendor reserves the right to make changes, alter, amend or change at any time the dimensions, areas, fittings, finishes, specifications items detailed here in without reference to or approval by the purchaser. This material should be read in conjunction with any Contract for Sale. All furniture illustrated is indicative only and is not included in the sale.